



RUTGERS HEALTH

School of Dental Medicine

Continuing Education

FALL 2025 CDE COURSES

The New Jersey Board of Dentistry requirement for each biennial renewal period, ten of the forty credit hours for dentists, must be completed as follows:

- 3 hours of cardiopulmonary resuscitation (CPR).
- 3 hours of pharmacology and internal medicine.
- 2 hours of infection control in dental settings.
- 1 hour in professional ethics and NJ law concerning the practice of dentistry.
- 1 hour in educational program concerning prescription opioid drugs.

Our courses that can fulfill these requirements will be indicated by this tag: **SBRC**

****REMINDER**** U.S. Drug Enforcement Administration (DEA) issued guidance outlining requirements for a one-time, eight-hour training on “treatment and management of patients with opioid or other substance use disorders.” The Medication Access and Training Expansion (MATE) Act passed as part of the Consolidated Appropriations Act of 2023, requires all DEA registered providers to complete this training.

Our courses that can fulfill both State Board and DEA MATE requirements will be indicated by this tag:

SBRC / DEA MATE

– For Dentists and Dental Team Members –

16th Annual

Rutgers School of Dental Medicine
and The American Academy of
Implant Dentistry



Ten Friday to Sunday Modules
September 2024 to June 2025

Featured Speakers In This Issue...

THOMAS DUDNEY, DMD

Friday, September 12, 2025

JAMES RUTKOWSKI, DMD

Saturday, September 13, 2025

**JENNIFER DOOBROW, DMD,
FACD, FICD**

Friday, September 19, 2025

BABAK NAJAFI, DDS, MDS

Wednesday, October 8, 2025

LOUIS KAUFMAN, DDS, FAGD

Wednesday, October 15, 2025

MARC GEISSBERGER, DDS, MA

Friday, October 24, 2025

MICHAEL MORGAN, DMD

Wednesday, October 29, 2025

JASON GOODCHILD, DDS

Friday, October 31, 2025

The Association for Continuing Dental Education (ACDE), including RSDM CDE and 40 other member schools, are jointly sponsoring a series of live webinars, featuring university-based key opinion leaders presenting on numerous topics to meet every dental professional's interests and schedule.

TUESDAY, JULY 15, 2025

8 p.m. ET | 2 credit hours | Tuition \$69
A Review of Partial Coverage Restorations
• DR. PIERRE-LUC MICHAUD

FRIDAY, JULY 18, 2025

11 a.m. ET | 1.5 credit hours | Tuition \$59
Immediate Anterior Implant Placement
and Aesthetic Soft Tissue Management
• DR. MATTHEW THACKER

TUESDAY, JULY 22, 2025

8 p.m. ET | 2 credit hours | Tuition \$69
QPR: Protocol for Inspiring Hope to
Individuals Experiencing Suicidal Crises
• DR. JULIETTE DANIELS

FRIDAY, AUGUST 1, 2025

11 a.m. ET | 2 credit hours | Tuition \$69
Healthcare 2.0 The Art and Science
of Mindful Communication
• DR. BRUCE FREEMAN

FRIDAY, AUGUST 8, 2025

11 a.m. ET | 2 credit hours | Tuition \$69
Improving the Osseointegration of Dental
Implants: Exploring Cellular Mechanisms,
Biological Timelines, and Patient Factors
Influencing Implant Success
• DR. ZEESHAN SHEIKH

TUESDAY, AUGUST 12, 2025

8 p.m. ET | 2 credit hours | Tuition \$69
The Importance of Evidence-Based
Practice Guidelines for Dental Treatment
of Medically Complex Patients
• DR. ALTAF SHAH

MONDAY, AUGUST 18, 2025

8 p.m. ET | 2 credit hours | Tuition \$69
Power of Precision: Use of Robotics
in Dental Implant Surgery
• DR. NIRANJAN JOSHI

THURSDAY, AUGUST 21, 2025

8 p.m. ET | 1.5 credit hours | Tuition \$59
Mouth as a Mirror of Systemic Disease
• DR. MADHU SHRESTHA

WEDNESDAY, AUGUST 27, 2025

8 p.m. ET | 2 credit hours | Tuition \$69
Medical Collaborations and Consultations
• DR. DAVID CARSTEN

TUESDAY, SEPTEMBER 9, 2025

8 p.m. ET | 2 credit hours | Tuition \$69
Elegant Solutions to a Difficult Rehabilitation:
Nuances and Options of a Case Study
• DR. JENNIFER S. EMERSON

SUNDAY, SEPTEMBER 14, 2025

3 p.m. ET | 1.5 credit hours | Tuition \$59
Advances in Endodontic Irrigation Techniques
• DR. KAPIL RAMESH JADHAV

TUESDAY, SEPTEMBER 16, 2025

8 p.m. ET | 2 credit hours | Tuition \$69
Update on Restoring Dental Implants in
2025-2026 – Avoiding Complications
• DR. CHANDUR WADHWANI

FRIDAY, SEPTEMBER 19, 2025

11 a.m. ET | 1.5 credit hours | Tuition \$59
Tips and Tricks to a Loose Implant Restoration
• DR. BEATRICE LEUNG

FRIDAY, SEPTEMBER 26, 2025

11 a.m. ET | 1.5 credit hours | Tuition \$59
The Fundamentals of Oral Systemic Health
• DR. MARK L. CANNON

MONDAY, OCTOBER 6, 2025

8 p.m. ET | 1.5 credit hours | Tuition \$59
Innovative Dentistry:
Exploring 3D Printing for New Practitioners
• DR. SANDERS BITENCOURT

FRIDAY, OCTOBER 10, 2025

11 a.m. ET | 1.5 credit hours | Tuition \$59
Providing Care to the Special Needs Patient
• DR. ENRIQUE VARELA

WEDNESDAY, OCTOBER 15, 2025

8 p.m. ET | 2 credit hours | Tuition \$69
Managing Technology in the Dental Office
• DR. MARCUS BING

MONDAY, OCTOBER 20, 2025

8 p.m. ET | 1.5 credit hours | Tuition \$59
Bone Preservation Strategies Following
Severe Traumatic Dental Injuries in Children
• DR. ISABEL MELLO

FRIDAY, OCTOBER 24, 2025

11 a.m. ET | 1.5 credit hours | Tuition \$59
Update on Denture Liners
• DR. AUDREY SELECMAN

WEDNESDAY, NOVEMBER 5, 2025

8 p.m. ET | 2 credit hours | Tuition \$69
Principles of Zygomatic Implants for the
Edentulous Maxilla
• DR. SOHAIL SAGHEZCHI

SATURDAY, NOVEMBER 15, 2025

11 p.m. ET | 1.5 credit hours | Tuition \$59
Provisional Implant Restorations:
Shaping Tissue, Esthetics & Confidence –
From Chairside to Digital Design
• DR. KATERINA ANASTASAKI



<https://cde.sdm.rutgers.rsdm-acde/>
ACDE Joint Provider Live Webinar Series

This will be the only Continuing Dental Education
Catalog for the FALL 2025 season.
To receive course alerts and reminders, sign-up for
email updates through our website at cde.sdm.rutgers.edu

**REGISTRATION
CONFIRMATIONS**

are sent two weeks
prior to the course date.

Confirmation includes
directions, parking information,
room location, registration time,
a receipt for tuition paid, etc.

We encourage early
registration, as this helps to
avoid unnecessary course
cancellations.

If you plan to register late,
call to ensure space is available
and to confirm logistical details.

*Residents and postdoctoral
students must include a letter
from their program director
verifying status.*

REGISTRATION FEE. Includes tuition, registration, handout materials, coffee breaks, lunch for most full-day courses, and other amenities involved in making this a pleasant learning experience. Residents and postdoctoral students must include a letter from their program director verifying status.

CANCELLATIONS & SUBSTITUTIONS. Cancellations received up to two working days before a course are refundable, minus a \$35 registration service charge (unless otherwise noted in a course outline) – or you may apply the full registration fee toward a future course within the same academic year. After that, cancellations are subject to the entire registration fee.

SPECIAL NEEDS. RSDM complies with the Americans with Disabilities Act. If you require special services, facilities or dietary considerations (vegetarian or otherwise) to support your participation in this activity, please contact Sherri Wilson at 973-972-6561.

SUNSHINE ACT STATEMENT. In compliance with the Physicians Payment Sunshine Act, the Office of Continuing Dental Education may release participants' names to applicable manufacturers who at times may provide an educational grant, in-kind and/or technical support for our programs.

PARTICIPANT CREDIT VERIFICATION. All participants are required to sign-in at the start of the course and following lunch. Credit letters will be provided at the End of the day and will not be mailed. Participants arriving late (one-half hour after course begins) or who may need to leave prior to completion will be asked to sign and note their arrival/ departure times. Participants should complete the self-reporting section of their credit letters. CDE will adjust the database to reflect the actual number of hours received. The participant's transcript will reflect actual credit hours if called upon by the State Board to verify attendance.

General Information**SPONSORSHIP:**

These courses are
sponsored by the Rutgers School
of Dental Medicine (RSDM).

Continuing Dental Education Staff

Janice L. Gibbs, MS
Executive Director

Sherri Wilson,
Program Coordinator

Robin Tyler,
Administrative Coordinator II

CREDIT: The Rutgers School of Dental Medicine (RSDM) is an approved course sponsor by the New Jersey Board of Dentistry. Our courses, which deal with the scientific or clinical practice of dentistry, professional responsibilities, or ethical obligations of the profession, fulfill Board requirements for dentists license renewal. Credit hours are granted on an hour-for-hour basis, provided the course is completed as designed.

RSDM is an ADA CERP recognized provider; the current term of acceptance extends to 6/2029. ADA CERP is a service of the American Dental Association to assist dental professionals in identifying quality providers of continuing dental education. ADA CERP does not approve or endorse individual courses or instructors, nor does it imply acceptance of credit hours by boards of dentistry. Concerns or complaints about a CE provider may be directed to the CE provider or to ADA CERP at www.ada.org/cerp. Rutgers is also an Academy of General Dentistry, approved national sponsor for FAGD/MAGD credit.

NOTE: Dental educational institutions are obligated to disseminate new knowledge related to dental practice. In so doing, some presentations may include controversial materials or commercial references. Sponsorship of a continuing dental education course by the Rutgers School of Dental Medicine does not necessarily imply endorsement of a particular philosophy, procedure, or product by this institution. Rutgers School of Dental Medicine reserves the right to modify course content, faculty and meeting locations; and also reserves the right to cancel a program, if necessary.

NOTE: The registered participant grants permission to the Office of Continuing Dental Education (and its designees and agents) to utilize the participant's image, likeness, actions and/or statements in any live or recorded audio, video, or photographic display for exhibition, publication, or reproduction made of, about, or at an activity without further authorization or compensation.

The Rutgers School of Dental Medicine is a proud member of the Association for Continuing Dental Education.
Founded in 1991, the ACDE provides a forum for cooperative, collaborative and mutual support among directors of university-based CDE programs.
The ACDE mission is to provide high quality programs with superior educational value to dental care professionals.



JULY 2025

- 30 Enteral Conscious Sedation 17

AUGUST 2025

- 27 Office-Based Airway Management (OBEAM)
Diagnosing and Treating Difficult Airway 4

SEPTEMBER 2025

- 10 Evidence-Based Dentistry 18
- 10 3-Hour Pharmacology & Internal Medicine for Dentists
(Inclusive of 1 hour of Opioids) **(SBRC)** 17
- 12 Be Aware of Wear: A Systematic Approach to
Diagnosing, Treatment Planning, & Restoring the Worn
Dentition & MACdentistry: When, How, and Why 5
• **THOMAS DUDNEY, DMD**
- 13 Effective Medical Evaluation and Pharmacology
Protocols for the Dental Patient **(SBRC)** 6
• **JAMES RUTKOWSKI, DMD**
- 17 4-Hour Pharmacology & Internal Medicine for Dentists
(Inclusive of 1 hour of Opioids) **(SBRC)** 18
- 18 Opiate Prescribing & Alternatives
in Pain Management **(SBRC)** 19
- 19 An Interdisciplinary Team Approach from
Tooth Preservation to Tooth Replacement 7
• **JENNIFER DOOBROW, DMD, FACD, FICD**
At the Pines Manor, Edison, NJ
- 24 Survey of Current Updates in Dental Ethics
and the Law **(SBRC)** 8
• **KEVIN EARLE, MBA, MPH**

SEPTEMBER 2025

- 24 Oral Medicine Nuts and Bolts 19
- 30 Dental Infection Control Essentials **(SBRC)** 20
• **JOHN MOLINARI, PHD**

OCTOBER 2025

- 3 Strategies for Comprehensive, Complication-Free
Implant-Based Restorative 20
- 4 Opiate Prescribing & Alternatives
in Pain Management **(SBRC)** 19
- 8 Medical Update: Review of the MD in DMD 20
- 8 Survey of Current Updates in Dental Ethics
and the Law **(SBRC)** 8
• **KEVIN EARLE, MBA, MPH**
- 8 Dilemmas in the Esthetic Zone:
A Multidisciplinary Approach to Crown
Lengthening and Lip Repositioning 10
• **BABAK NAJAFI, DDS, MDS, FRCD(C)**
- 10 Simplifying Adhesive Dentistry 1
• **RAFAEL PACHEO, DDS, MSc, PhD**
- 14 Dental Infection Control Essentials **(SBRC)** 9
• **JOHN MOLINARI, PHD**
- 15 The Digital Exam 12
• **LOUIS KAUFMAN DDS, FAGD**
At the Pines Manor, Edison, NJ
- 17 2 Topics / 1 Day – High Stakes Dental Safety:
Don't Panic, You've Got This -and- Right Under
(and Up) Our Noses...And Evolving Before
Our Eyes, Emerging & Re-emerging Disease 13
• **NANCY DEWHIRST, RDH, BS**

OCTOBER 2025

- 17** Two-Implant Mandibular Overdenture:
Restoring Quality of Life, as Well as Teeth 21
- 20** The Internet Course:
Orofacial Pain from a Medical Perspective 21
- 20** Opiate Prescribing & Alternatives
in Pain Management **(SBRC)** 19
- 22** Substance Use Disorders Training
[DEA MATE & SBRC] 22
- 24** Injection Molding: Incorporating Innovative
Concepts for Esthetic and Reconstructive
Dentistry in Clinical Practice 14
• **MARC GEISSBERGER, DDS, MA**
- 29** Intelligent Simplification of Direct Composites:
Techniques for Predictability, Esthetics
and Profitability 15
• **MICHAEL MORGAN, DDS**
- 31** Better Medicine, Better Dentistry:
Update for the Treatment of Medically-Complex
Dental Patients **(SBRC)** 16
• **JASON H. GOODCHILD, DMD**

NOVEMBER 2025

- 4** Local Anesthetic and Pain Control:
Recertification for Dental Hygienist 23
- 19** Patient Monitoring for Nitrous Oxide
Analgesia Delivery - and -
Recertification for Dental Hygienists
and Registered Dental Assistant 23

GUIDELINES for Continuing Dental Education Requirements

The New Jersey Board of Dentistry requires, for every license renewal period, 40 hours of continuing education for licensed dentists in New Jersey. This 40-hours now also includes 10 mandatory hours for Dentists (Dental Hygienists and Registered Dental Assistants have 6 mandatory hours) in the following:

- 1. Cardiopulmonary Resuscitation (CPR)**, per American Heart Association certification standards. Includes use of an automatic external defibrillator (AED), unconscious and conscious choking, and rescue breathing. Training must be done in-person.
3 hours for Dentists / 3 hours for DH & RDA
- 2. Pharmacology and Internal Medicine**, includes appropriate use of analgesics, antibiotics, local anesthesia, and agents to control anxiety, drug (medication) knowledge and interactions, prescription writing, abuse of prescriptions by patients, taking complete medical histories, and the use of the NJ Prescription Monitoring Program.
3 hours for Dentists
- 3. Preventing and Controlling Infectious Diseases** and managing personnel health and safety concerns related to infection control in dental settings.
2 hours for Dentists / 1 hour for DH & RDA
- 4. Professional Ethics and NJ law concerning the practice of dentistry** and managing personnel health and safety concerns related to infection control in dental settings.
1 hour for Dentists / 1 hour for DH & RDA
- 5. Educational programs or topics concerning Prescription Opioid Drugs**, including responsible prescribing practices, alternatives to opioids for managing and treating pain, and the risks and signs of opioid abuse, addiction, and diversion.
1 credit hour for Dentists / 1 hour for DH & RDA

Please visit the New Jersey Board of Dentistry website for complete details.

Office-Based Emergency Airway Management (OBEAM) Diagnosing and Treating Difficult Airway – A Simulation Course –

AAOMS Approved Simulation Equivalency Course

The Office-Based Emergency Airway Management (OBEAM) simulation course will prepare participants to manage airway emergencies during procedural sedation. Attendees will review basics of airway management including use of adjunct assistive devices, as well as advanced techniques such as placement of laryngeal masks and laryngoscopy. Simulation-based scenarios will also be reviewed and give participants the skills and confidence needed to ensure patient safety in an office-based setting.

Objectives:

By the end of the curriculum, participants should be able to:

- Identify and assess signs of a difficult airway.
- Formulate a structured approach to managing a difficult airway.
- Safely and effectively perform advanced airway management techniques.
- Diagnose and treat laryngospasm during airway management.
- Utilize adjunct airways to optimize ventilation and oxygenation.
- Communicate effectively with a team during a critical airway scenario.
- Recognize the role of alternative airway devices and techniques.

See Website for full course details: cde.sdm.rutgers.edu

FACULTY:

George Tewfik, MD is a Board-certified anesthesiologist and an Associate Professor at Rutgers University New Jersey Medical School.

Rania Aziz, MD is a Board-certified Pediatric Anesthesiologist at Rutgers University New Jersey Medical School.

Vincent B. Ziccardi, DDS, MD, FACS is the Chair of the Department of Oral and Maxillofacial Surgery, Rutgers School of Dental Medicine

Online 4 Hour Didactic Training must be completed prior to Simulation Training.

*****Note: Registrants will receive separate email instruction to access the online training.**

Wednesday, August 27, 2025

8 a.m. to 10 a.m. or 10:30 a.m. to 12:30 p.m. / 2 participation credit hours

IN-PERSON at Rutgers School of Dental Medicine

\$995 Dentists / Code: 26D0924

ESTHETIC / RESTORATIVE DENTISTRY – ONE DAY / TWO TOPICS**MACdentistry:****The What, When, How, and Why of
Current Indirect Restorative Materials,
Adhesives and Cements**

As restorative materials, adhesives, and cements continue to evolve and improve, keeping up with the latest advancements is difficult. Patients continue to have high expectations for long term clinical success. Having an understanding and working knowledge of these materials will enable you to make sound decisions and drive long term success. We will discuss factors affecting selection of indirect restorative materials that will satisfy aesthetic and functional goals of patients as conservatively as possible. Cases will be used to demonstrate these materials, bonding agents and cements in different clinical situations.

Learning Objectives:

- Recognize the clinical signs of intrinsic and extrinsic erosion.
- Office protocols to help patients prevent and/or treat acid erosion.
- Recognize the clinical signs of horizontal and vertical wear patterns.
- Designing an occlusal scheme that fits and identifying grinding patterns of the patient.

Be Aware of Wear:**A Systematic Approach to
Diagnosing, Treatment Planning, and
Restoring the Worn Dentition**

In today's society tooth wear is more prevalent than ever and it is therefore incumbent upon the entire dental team to be well versed in recognizing the clinical signs of wear while understanding the importance of prevention when possible and the restorative options when necessary. This half day lecture will illustrate the different types of tooth wear with clinical examples and demonstrate a systematic approach to diagnosis and treatment.

Learning Objectives:

- Recognize the clinical signs of intrinsic and extrinsic erosion.
- Office protocols to help patients prevent and/or treat acid erosion.
- Recognize the clinical signs of horizontal & vertical wear patterns.
- Designing an occlusal scheme that fits and identifying grinding patterns of the patient.
- Bite opening vs. crown lengthening vs. orthodontic intrusion to gain space for restorations.
- The importance of an interdisciplinary team in treating wear cases.
- A systematic approach in the treatment of simple to complex wear cases.

**Guest Speaker:****THOMAS E. DUDNEY, DMD**

DR. THOMAS E. DUDNEY is a graduate of Univ. of Alabama at Birmingham School of Dentistry. He has served as Clinical Director for the Aesthetic Advantage hands-on programs taught by Dr. Rosenthal at New York Univ. and Eastman Dental Clinic in London. Presently he is the clinical director of the Pacific Aesthetic Continuum (PAC) hands-on programs. In addition to teaching hands-on programs, he has presented workshops and lectures at dental meetings and has authored several articles on aesthetic and restorative dentistry. He is a member of the American Dental Association, the Alabama Dental Association, and the American Academy of Cosmetic Dentistry. He is also a fellow of the American Society for Dental Aesthetics and a Diplomate of The American Board of Aesthetic Dentistry as well as a member of Catapult Education's Speakers Bureau.

Friday, September 12, 2025

9 a.m. to 5 p.m. / 7 credit hours

IN-PERSON at Rutgers School of Dental Medicine

\$235 Dentists • \$165 Auxiliaries/Residents / Code: 26D0202

Effective Medical Evaluation and Pharmacology Protocols for the Dental Patient (SBRC)

This interactive, clinically-oriented 3-hour program will cover the following topics: (1) steps for performing a medical evaluation of the dental patient, (2) proper use of epinephrine in medically compromised patients, (3) managing patients who take anticoagulant, antithrombotic, and antiplatelet agents, (4) rational, responsible antibiotic prescribing for dental infections and surgical prophylaxis and (5) understanding opioid addiction and responsible opioid prescribing.

The presentation is designed for dentists, dental hygienists, and dental assistants.

Course Objectives:

After the course, participants will be able to:

- Understand the steps involved in efficiently assessing the medical history of dental patients in the dental office.
- Communicate effectively with medical colleagues when requesting a medical evaluation.
- Recognize the importance of knowing how much epinephrine can be used in medically compromised patients.
- Manage dental patients taking anticoagulant, antithrombotic, and antiplatelet agents requiring oral surgical procedures.
- Appropriately prescribe antibiotics for dental-alveolar infections and surgical prophylaxis.
- How opioid addiction occurs, and the role clinicians have in responsible opioid prescribing.



Guest Speaker:

JAMES RUTKOWSKI, DMD, Ph.D.

DR. RUTKOWSKI is a Pharmacist and Dentist with a PhD. in Pharmacology. He has authored multiple publications in peer-reviewed journals and textbook chapters. Jim is Editor-in-Chief of the Journal of Oral Implantology, a Diplomate/President of the American Board of Oral Implantology/Implant Dentistry (ABOI/ID), and an Honored Fellow of the American Academy of Implant Dentistry (AAID). He lectures nationally and internationally on medical evaluations, pharmacology, sedation techniques, bone grafting materials, and methods for treating medically compromised dental patients. Dr. Rutkowski has been bestowed the Gershkoff-Goldberg Award for service to the field of Implant Dentistry and the Isiah Lew Memorial Research Award for contributions to research in the field of Implant Dentistry.

For 44 years, Dr. Rutkowski maintained a dental practice in Pittsburgh and Clarion, Pennsylvania, concentrating on treating apprehensive/medically compromised patients.

Saturday, September 13, 2025

10 a.m. to 1 p.m. / 3 credit hours

ONLINE through Rutgers School of Dental Medicine

\$125 All Registrants / Code: 26D0203

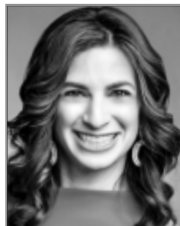
An Interdisciplinary Team Approach from Tooth Preservation to Tooth Replacement

This dynamic and energizing presentation emphasizes the interdisciplinary team approach to ultimate patient care. Developing effective strategies for patient communication that both enhance case presentation and case acceptance is the key to differentiating your practice in our challenging economic environment. Emphasis will be placed on elevating the entire dental team as a key partner in care from tooth preservation to tooth replacement. A highlight of this program will be discussing numerous advancements in treatment modalities for periodontal, regenerative, and implant therapies that all have a significant impact on Comprehensive Care Dentistry. Building a solid foundation is essential to your patients' long-term success!

Learning Objectives:

After the course, participants will be able to:

- Understand the impact that interdisciplinary care plays in a positive patient experience.
- Identify periodontal health goals that will greatly impact effective case presentation and treatment acceptance.
- Highlight the benefits of growth factors in hard and soft tissue Define numerous advancements in technology and treatment modalities that can enhance your restorative outcomes.
- Develop an action plan and decision tree to promote comprehensive patient care.



Guest Speaker:

JENNIFER DOOBROW, DMD, FACD, FICD

DR. JENNIFER HIRSCH DOOBROW, a Board-Certified Periodontist, is the Owner and CEO of Periodontal and Implant Associates, Inc. located in Cullman, AL. She earned her DMD at the Medical University of South Carolina in 2007 and received her certification in Periodontics from the University of Alabama at Birmingham (UAB) in 2010.

She serves as a faculty member for the Pikos Institute, was the General Chair for the 2017 Gulf Coast Dental Conference and is the 2017-2018 Chair of the Leadership Council for the UAB School of Dentistry. She is on the Executive Council and serves as the Corporate Advisory Chair for the Southern Academy of Periodontology and sits on several committees for the American Academy of Periodontology. She holds Past-President positions in the Alabama Society of Periodontists and the Wilson Chenault Dental Study Club.

She has published articles in *Compendium*, *Inside Dentistry*, *Dental Economics*, *Dentistry IQ*, *Surgical Restorative Resource*, and *Perio-Implant Advisory*, and lectures Internationally on dental implants, periodontal hard and soft tissue regeneration, and perio-plastic therapies.

Friday, September 19, 2025

9 a.m. to 5 p.m. / 7 credit hours

IN-PERSON at The Pines Manor in Edison, NJ

\$245 Dentists • \$195 Auxiliaries/Residents / Code: 26D0204

GUIDELINES for Continuing Dental Education Requirements

The New Jersey Board of Dentistry requires, for every license renewal period, 40 hours of continuing education for licensed dentists in New Jersey. This 40-hours now also includes 10 mandatory hours for Dentists (Dental Hygienists and Registered Dental Assistants have 6 mandatory hours) in the following:

- 1. Cardiopulmonary Resuscitation (CPR)**, per American Heart Association certification standards. Includes use of an automatic external defibrillator (AED), unconscious and conscious choking, and rescue breathing. Training must be done in-person.
3 hours for Dentists / 3 hours for DH & RDA
- 2. Pharmacology and Internal Medicine**, includes appropriate use of analgesics, antibiotics, local anesthesia, and agents to control anxiety, drug (medication) knowledge and interactions, prescription writing, abuse of prescriptions by patients, taking complete medical histories, and the use of the NJ Prescription Monitoring Program.
3 hours for Dentists
- 3. Preventing and Controlling Infectious Diseases** and managing personnel health and safety concerns related to infection control in dental settings.
2 hours for Dentists / 1 hour for DH & RDA
- 4. Professional Ethics and NJ law concerning the practice of dentistry** and managing personnel health and safety concerns related to infection control in dental settings.
1 hour for Dentists / 1 hour for DH & RDA
- 5. Educational programs or topics concerning Prescription Opioid Drugs**, including responsible prescribing practices, alternatives to opioids for managing and treating pain, and the risks and signs of opioid abuse, addiction, and diversion.
1 credit hour for Dentists / 1 hour for DH & RDA

Please visit the New Jersey Board of Dentistry website for complete details.

Survey of Current Updates in Dental Ethics and the Law (SBRC)



Presented by:
KEVIN B. EARLE, MBA, MPH

To keep New Jersey Dentists abreast of the latest developments on the regulatory front and in the ADA Code of Professional Conduct, this course will cover:

- Newly-passed legislation permitting dentists to administer HPV and flu vaccinations, the status of rulemaking by the Board of Dentistry, and the emergency authorization for dentists to administer COVID vaccinations.
- A discussion about the White Paper on the Ethics of Vaccination issued by the ADA Council on Ethics, Bylaws and Judicial Affairs.
- HIPAA considerations on requesting COVID-19 vaccination status of patients and employees.
- New Board regulations on training and limitations on the use of injectable pharmacologics (like Botox™).
- New laws and Board regulations on telemedicine and telehealth.
- New Board regulations on anesthesia and sedation.
- New requirements for all dentists to have AEDs, positive pressure oxygen and CPR/ACLS training.

***Additional information is available on our website:
cde.sdm.rutgers.edu***

Two dates to choose from:

Wednesday, September 24, 2025

1:00 to 2:00 p.m. / 1 credit hour
ONLINE through Rutgers School of Dental Medicine
\$59 for Dentists / Code: 26D0205-C24

Wednesday, October 8, 2025

7:30 to 8:30 p.m. / 1 credit hour
ONLINE through Rutgers School of Dental Medicine
\$59 for Dentists / Code: 26D0205-D08

Dental Infection Control Essentials

Dental professionals are routinely at an increased risk of cross-infection when treating patients. In response, application of evidence-based infection prevention practices and strategies provide effective protection during provision of health-care. This seminar will focus on a practical discussion of current dental infection control recommendations. Discussion will include hand hygiene, sharps safety, personal protective equipment (PPE), instrument reprocessing, environmental surface disinfection, and dental water treatment. Application of Standard and Transmission-based Precautions also will be considered in light of updated CDC, OSHA, NIOSH, FDA, and EPA publications.

Seminar Objectives:

After the course, participants will be able to:

- Describe application of standard precautions as the foundation of infection prevention.
- Discuss the impact of COVID-19 and SARS-CoV-2 infection on dental infection precautions.
- Comprehend recommended transmission-based precautions associated with controlling aerosols and airborne pathogens.
- Understand the most recent updates for CDC and OSHA infection control recommendations and regulations.
- Understand the rationale and practices of effective, hand hygiene procedures.
- Describe protocols for instrument processing and surface disinfection.
- Understand how to effectively monitor reprocessing and sterilization procedures.
- Describe factors which can lead to dental unit waterline (DUWL) contamination.
- Comprehend practical strategies which can minimize DUWL contamination.



Guest Speaker:

JOHN MOLINARI, Ph.D.

DR. MOLINARI is Professor Emeritus at the University of Detroit Mercy School of Dentistry, where he served for 32 years as Chairman of Biomedical Sciences and Director of Infection Control. He has also been Director of infection Control at the Dental Advisor in Ann Arbor, Michigan, where he was involved in research studying new infection control technologies and products. He has published over 500 scientific articles, text chapters, and abstracts in the areas of microbiology and immunology, and lectures nationally and internationally on topics dealing with infectious diseases and infection control. Dr. Molinari is co-author of the text *Cottone's Practical Infection Control in Dentistry*, as well as a founding member and President of OSAP. He has served as a consultant for the CDC, ADA Council on Scientific Affairs, Council on Dental Practice, and regional hospitals.

Tuesday, September 30, 2025

7:30 to 9:30 p.m. / 2 credit hours

ONLINE through Rutgers School of Dental Medicine

\$69 Dentists / Code: 26D0206-C30

Next Scheduled Dates:

Tuesday & Wednesday, October 14 & 15, 2025

12:30 to 1:30 p.m. each day / 2 credit hours

ONLINE through Rutgers School of Dental Medicine

\$69 Dentists / Code: 26D0206-D14

Dilemmas in the Esthetic Zone: A Multidisciplinary Approach to Crown Lengthening and Lip Repositioning

Smile Design is an integral part of modern dentistry, focusing on creating esthetically pleasing smiles tailored to each patient. A harmonious and balanced smile requires a multidisciplinary approach to address any discrepancies in white and pink esthetics, including Excessive Gingival Display and other concerns. Periodontal, Peri-implant, and Facial Plastic Procedures offer an array of options, from Esthetic Crown Lengthening to Lip Repositioning for improving smile esthetics.

This presentation will discuss the art and science of smile design based on patients' unique facial and dental features. A comprehensive treatment algorithm will be elaborated from periodontal, restorative, and orthodontic perspectives, and clinical case discussions would demonstrate evidence-based approaches and their patient-centered outcomes in short- and long-term.

Objectives:

Participants will understand:

- The principles of Smile Design and the indications of Esthetic Crown Lengthening and Modified Lip Repositioning Surgery with an updated Decision Tree.
- The importance of a multidisciplinary approach in correcting Excessive Gingival Display and other esthetic discrepancies from restorative, periodontal, and orthodontic aspects.
- The patient-reported outcomes of modern approaches with evidence-based modifications.



Presented by:

BABAK NAJAFI, DDS, MDS, FRCD(C)

Dr. Najafi is a periodontist at his private practice, Origins Specialty Dentistry in San Antonio, Texas. Alongside his practice, he is an Adjunct Faculty in the Department of Periodontics at Rutgers School of Dental Medicine and a Clinical Assistant Professor at UT Health San Antonio School of Dentistry.

He has completed his specialty residency in Periodontology and earned Master of Dental Science from Rutgers, The State University of New Jersey. As a Fellow-Elect in the Royal College of Dentists, Dr. Najafi has published several articles on periodontal regenerative procedures, dental implants, and minimally invasive dentistry and served as an Ad-Hoc reviewer for Journal of Periodontology and Journal of Oral Implantology.

Wednesday, October 8, 2025

10 a.m. to 1 p.m. / 3 credit hours

ONLINE through Rutgers School of Dental Medicine

\$125 All Registrants / Code: 26D0207

Simplifying Adhesive Dentistry

Adhesive Dentistry has transformed the treatment planning and procedural steps in modern dentistry. The use of adhesive systems and polymeric materials such as resin composites, coupled with ceramics, enables clinicians to preserve more sound dental structures during restorative procedures while achieving exceptional esthetic results with robust mechanical strength and longevity. However, the high technique sensitivity of these procedures can result in issues like marginal gaps, color alteration, marginal staining, reduced mechanical strength, de-bonding, reduced longevity, post-operative sensitivity, and others. Proper technique and correct material selection are crucial for successful restorative procedures. This course aims to provide evidence-based information to clinicians, explaining how to apply complex concepts to clinical practice in a straightforward manner.

Objectives:

- Describe the different types of adhesive techniques and the most recent dental materials (adhesive systems, resin composites, resin cements, and ceramics).
- Select the appropriate restorative system (ceramic, metal, composite, adhesive system, resin cement) for each substrate and clinical situation.
- Identify the problems and limitations of current adhesive techniques and materials.
- Use guidelines to minimize errors and increase the longevity of adhesive restorations.



Presented by:

RAFAEL ROCHA PACHECO, DDS, MSc, PhD

DR. PACHECO is an Associate Professor and Section Director of Dental Materials at the Dental College of Georgia at Augusta University. He is the course director of dental materials to dental students, graduate, and dental hygiene students, and teaches operative dentistry and fixed prosthodontics.

Dr. Pacheco holds a D.D.S., a M.Sc. (Dental Materials), and a Ph.D. (Dental Materials). He is currently the Vice Chair of the Department of Restorative Sciences at the Dental College of Georgia. He was previously an Associate Professor with tenure and Department Chair at the University of Detroit Mercy, School of Dentistry (since 2015). Dr. Pacheco is the author/co-author of multiple peer reviewed journal articles, five book chapters and his research is focused on Dental materials used in Restorative Dentistry (Polymerization, Dental Ceramics, Resin Composites, and Adhesive Systems).

Friday, October 10, 2025

9 a.m. to 5 p.m. / 7 credit hours

IN-PERSON at Rutgers School of Dental Medicine

\$235 Dentists • \$165 Auxiliaries/Residents

Code: 26D0208

The Digital Exam

Optimizing Oral Health and Providing Care with a Purpose

This course will discuss CBCT, intraoral digital impressions, and introduce a unique tactile pressure mapping technique used to visualize dynamic occlusal forces. We will explore orthodontics impact on minimal prep veneers and the benefits of virtual wax-up reduction templates and trial smiles to enhance final case delivery.

We will discuss how new concepts in soft tissue management can add to greater patient satisfaction. We will review tissue fluorescence and why it must be a part of every comprehensive exam and recall exam.

The demands of being a dentist and a practice owner are great, and we need to take care of ourselves and our teams to provide the best care possible. I will reveal the virtual front desk and why using it can reduce front office stress. I will show you neuro-acoustic software that reduces patient stress and anxiety and helps you increase focus.

Learning Objectives:

- Learn how leveraging available technology will improve diagnostic protocols and enhance the patient experience.
- Identify communication techniques that influence patients on occlusion and its critical impact on dentition longevity.
- Recognize how orthodontics impact successful esthetic outcomes.
- Review smile design and the minimal prep veneer and when orthodontics has to be part of the overall rehabilitation of the patient's dentition.
- Identify tools to reduce stress and anxiety for the dental team and patient.



Presented by:

LOUIS KAUFMAN DDS, FAGD

As an educator, author, and practicing clinician Dr. Kaufman brings a special “big-picture” approach” to personalized dental care.

Doctor Kaufman graduated from University of Illinois Chicago College of dentistry in 1995. Dedicated to continuing his education in dentistry, he is honored to have earned a fellowship award in the Academy of General Dentistry. He is committed to playing a role in the advancement of the profession through his research, publications, lectures and administration roles. Dr. Kaufman has received numerous forms of national recognition from his work as an educator and clinician. His special interests in Dentistry include dental implants, comprehensive reconstruction, treatment planning, cosmetic smile design, minimal preparation veneers, and three-dimensional imaging, minimally invasive smile design and comprehensive full mouth reconstructions.

Wednesday, October 15, 2025

9 a.m. to 5 p.m. / 7 credit hours

IN-PERSON at The Pines Manor in Edison, NJ

\$245 Dentists • \$195 Auxiliaries/Residents

Code: 26D0209

TWO TOPICS / ONE DAY – PRESENTED BY NANCY DEWHIRST

High Stakes Dental Safety: Don't Panic, You've Got This!

This combined course covers CA Dental Board's CE requirements, and reviews CAL OSHA annual training topics. Perfect your safety program, address some possible weak links and consider your safety options! Review physical and chemical hazards and today's disease transmission risks, considering bloodborne, contact, and airborne pathogens. Get the links to the best resources and get some great safety tips! Bring your whole safety team!

Optional: Attendees learn by trying out several safety products and practices.

Outcomes:

- Recognize and manage bloodborne, contact, droplet and airborne diseases.
- Identify best practices to protect workers and patients.
- Make sense of evolving rules and recommendations for changing infection risks.
- Review physical, biological and chemical Hazard Communications.

Right Under (and Up) Our Noses... And Evolving Before Our Eyes, Emerging & Re-emerging Diseases

This interactive seminar explores personal health issues such as new and altered diseases of importance to dental professionals, expanding on the topics covered in annual infection control and OSHA training. Attention is given to resistant pathogens, biofilm diseases, and pathogens with pandemic potential, particularly respiratory diseases, relative to occupational risk, illness prevention, and post-exposure responses. Practice and evaluate hand hygiene techniques and PPE use. Leave with a plan for managing today's microbial challenges using Standard and Transmission-based precautions, including building air safety control.

Learning Objectives:

- Recognize and assess well-known infectious diseases.
- Be able to identify and explain current trends in infectious diseases.
- Be informed of and prepared for safety challenges.
- Select infection control and safety strategies for usual and unusual disease risks.



Guest Speaker:

NANCY DEWHIRST, RDH, BS

MS. DEWHIRST graduated from the University of Southern California, practiced dental hygiene for 20 years, is an adjunct dental hygiene faculty at West Coast University, and a member of Sigma Phi Alpha. Ms. Dewhirst is consistently listed as one of the nation's "Leaders in CE." She presents over 100 seminars a year, is featured at major U.S. and Canadian Dental Conferences, and is a member of the California Dental Association Speakers Bureau. She is Editor-in-Chief of OSAP's Infection Control In Practice, has many articles published in dental peer-reviewed journals, and has contributed to dental textbooks and guidance documents.

Friday, October 17, 2025

9 a.m. to 4 p.m. / 6 credit hours

IN-PERSON at Rutgers School of Dental Medicine

\$195 Dentists • \$155 Auxiliaries/Residents / Code: 26D0210

Injection Molding: Incorporating Innovative Concepts for Esthetic and Reconstructive Dentistry in Clinical Practice

This fast-paced program will introduce clinicians to multiple injection molding techniques and applications. Treatment planning and case selection for anterior esthetic cases, loss of vertical dimension cases, wear cases, and full mouth reconstruction will be reviewed. Focus will be placed on how to prepare for clinical cases using the injection molding method. Materials and armamentarium that lend themselves to injection molding will be explored. Proper bonding, placement and finishing techniques will be discussed and practiced.

Learning Objectives:

- Understand how injection molding fits into your clinical practice with step-by-step techniques.
- Learn how injection molding maximizes your clinical outcomes and profitability from simple to complex casework.
- Practice multiple techniques using injection molding principles.
- Practice with various materials that are designed ideally for injection molding.
- Learn protocols for finishing and polishing to yield the most esthetic results.



Guest Speaker:

MARC GEISSBERGER, DDS, MA

DR. MARC GEISSBERGER taught at University of the Pacific for 30 years and ran Pacific's prestigious, complex and esthetic rehabilitation program. He is also a researcher and a published author in the areas of dental materials, contemporary fixed prosthodontics, and esthetic dentistry. He serves as a consultant for many dental materials companies and helps guide product development.

During his 30 years in academia, he has maintained a private practice geared toward restorative dentistry with his brother and fellow Pacific alum Dr. Jeffrey Geissberger. He believes his continual involvement in providing patient care as well as a role in academia has given him a unique balance that allows him to blend the best of both worlds.

Dr. Geissberger is a member of the Catapult Education Speakers Bureau, has won several teaching awards, and has presented over 450 lectures and hands-on workshops to colleagues in the United States, Canada, Australia, New Zealand, China, Peru, Denmark, and Taiwan. He has co-authored and published numerous scientific papers and a textbook entitled *Esthetic Dentistry in Clinical Practice* for Wiley-Blackwell, which is currently available in 4 languages (English, Spanish, Polish, and Turkish).

Dr. Geissberger earned a master's degree in educational psychology in 1994 and has been a Certified Personal Trainer (CPT) with the National Academy of Sports Medicine since 2008. He completed his Fitness Nutrition Specialty (FNS) training in 2011.

Dr. Geissberger's goal is to provide an educational experience for your group in a non-intimidating format that focuses on providing the clinician with the latest techniques and information that can be immediately incorporated into everyday practice.

Friday, October 24, 2025

9:00 a.m. to 5:00 p.m. / 7 participation credit hours

IN-PERSON at Rutgers School of Dental Medicine

\$395 All Registrants / Code: 26D0211

Intelligent Simplification of Direct Composites: Techniques for Predictability, Esthetics and Profitability

Direct resin has become one of the restorative materials of choice in both general and high-end esthetic practices. The explosion of demand by patients for esthetic dental services has led to an array of new dental products and treatments for practitioners to choose from. A new generation of composite resins can be utilized with a simplified protocol to create amazing anterior and posterior restorations that rival the beauty and strength of porcelain. This presentation will provide clinicians with an arsenal of practical techniques to predictably restore anterior and posterior direct composites with efficiency, predictability and esthetics. Subjects discussed will include a wide range of direct resin uses, including predictable shade selection, simplified preparations, natural layering, multiple contact predictability and efficient finishing and polishing. Procedures reviewed will also include preventing post-operative sensitivity, flowable resin use, mixed media cases, indirect restoration blockout, provisionalization, mockups, repairs/renewals, photography, and advanced aesthetics. For those just starting to place direct resins to clinicians seeking advanced European artistry, valuable and practical direct resin pearls and composite gems gleaned from across the globe will be shared with attendees. Come discover new avenues to market your practice, attract an untapped cosmetic patient base and jump start your practice Monday morning!

Learning Objectives:

- Discover a simplified shade mapping system to efficiently choose the value, shade and surface characteristics of any resin restoration.
- Learn the benefits of direct resin restorations over other alternatives and discover the advantages of new resin materials
- Understand techniques to simplify layering and achieve natural polychromaticity in as little as two shades.
- Eliminate post-op sensitivity easily and predictably.
- Discover how to efficiently and predictably restore Class IV restorations, Class V lesions and multiple Class II posterior composites.
- Learn simplified placement, finishing and polishing techniques.



Presented by:

MICHAEL MORGAN, DDS

Often referred to by his colleagues as “the Michelangelo of dentistry,” Dr. Michael Morgan is equal parts artist, pioneer, and guide. After dental school, Dr. Morgan embraced the challenging field of direct composite restorations and aesthetic dentistry. While studying in Europe under the tutelage of the world’s most skilled dental artists, Dr. Morgan began developing the comprehensive, cutting-edge philosophy that guides his work today.

Dr. Morgan graduated from the University of Illinois School of Dentistry in Chicago. He then studied the art of cosmetic dentistry at the University of Geneva, Switzerland with some of the world’s most talented dental artists. He is a published author and international lecturer on cosmetic dentistry, implant dentistry, and anxiety-free dentistry. He is the only dentist in the state of Illinois to have taught at both the University of the Pacific in San Francisco – Pacific Aesthetic Continuum (PAC~Live) and the Las Vegas Institute for Advanced Dental Studies – two of the most prestigious training institutes in the world.

In his thriving practice in Hinsdale, Illinois, Dr. Morgan synthesizes the venerable tradition of conservative dentistry, innovative materials, advanced techniques, and digital photography to establish doctor-patient partnerships that achieve life-altering aesthetic goals.

Wednesday, October 29, 2025

9 a.m. to 5 p.m. / 7 credit hours

IN-PERSON at the Rutgers School of Dental Medicine

\$235 Dentists • \$165 Auxiliaries/Residents / Code: 26D0212

Better Medicine, Better Dentistry

Updates for the Treatment of Medically-Complex Dental Patients

(SBRC)

We commonly see medically-complex patients. Management of these patients include not only understanding the chronic disease states but also the medications the patient is taking. And finally, how does all this information potentially change how, when, and where these complex dental patients should be treated?

This interactive program looks at some of your most critical patients, common disease states and their management. Case studies will augment the delivery of key points and a problem-based learning approach is encouraged so that each participant's questions are addressed. Most importantly, you will learn at least five strategies to successfully treat medically-complex patients on Monday morning; after all, the goal is to make sure all dental appointments are not just successful for your patient, but also for you and your staff.

Objectives:

- Understand the four main challenges of assessing medically-complex dental patients.
- Discuss the concept of procedural risk and how to select and de-select appropriate patients.
- Describe the four main risk factors to consider when treating medically-complex patients.
- Review common disease states and/or conditions such as diabetes mellitus, cardiovascular disease, antibiotic prophylaxis, bleeding disorders, and more.
- Learn how to plan and implement a strategy for safe and effective dental treatment of patients with complex medical histories.



Presented by:

JASON H. GOODCHILD, DMD

Jason H. Goodchild, DMD received his undergraduate degree from Dickinson College in Carlisle, PA. He went on to receive his dental training at the University of Pennsylvania School Of Dental Medicine (Philadelphia, PA).

Dr. Goodchild has published numerous peer-reviewed articles and lectures internationally on the topics of treatment planning, treatment of medically-complex dental patients, restorative dentistry, pharmacology, emergency medicine in dentistry, enteral sedation dentistry, and dental photography publications and dental textbooks. He is a founding member of the World Clinical Laser Institute.

He is currently the Vice President of Clinical Affairs at Premier Dental Products Company (Plymouth Meeting, PA), an Associate Clinical Professor in the Department of Oral and Maxillofacial Surgery at Creighton University School of Dentistry (Omaha, NE), and Adjunct Assistant Professor in the Department of Diagnostic Sciences at the Rutgers School of Dental Medicine (Newark, NJ). Dr. Goodchild maintains a private general dental practice in Jenkintown, PA.

Friday, October 31, 2025

9 a.m. to 4 p.m. / 6 credit hours

IN-PERSON at Rutgers School of Dental Medicine

\$235 Dentists • \$165 Auxiliaries/Residents / Code: 26D0213

Enteral Conscious Sedation in the Dental Practice

– Live Webinar –

This course will present an update and review of physiology and physical evaluation of medically-complex patients. A detailed review of the pharmacology of enteral medications and recognition and management of anesthesia complications will be presented. We will also discuss proper patient monitoring using the required monitoring equipment. Setting up a proper emergency kit and management of medical and anesthesia related emergencies will also be presented.

Course Objectives:

- Review the anatomy and physiology of the cardiac and respiratory system.
- Review common medical conditions and current therapeutic interventions.
- Relate medical conditions to their impact in delivery of dental services.
- Discuss patient evaluation in ascertaining relative risks in performing dental procedures under enteral sedation.
- Establish guidelines and limitations in the delivery of dental services based upon medical conditions.
- Update on the pharmacology of enteral medications.
- Recognize and manage anesthesia complications.
- Recognize and manage common medical emergencies.

Faculty:

Department of Oral & Maxillofacial Surgery

PAMELA ALBERTO, DMD, BS

Course Director / BLS Instructor

Clinical Associate Professor

PLUS: Faculty from the

Department of Oral & Maxillofacial Surgery

Four Wednesdays:

July 30 – August 6, 13 & 20, 2025

ONLINE thru Rutgers School of Dental Medicine

9 a.m. to 2 p.m. / 20 credit hours

\$995 Dentists / Code: 26D0901

Pharmacology and Internal Medicine for Dentists (SBRC)

The course will focus on the fundamentals of pharmacology and internal medicine as related to the practice of dentistry.

Training includes the appropriate use of:

- Analgesics.
- Antibiotics.
- Local anesthesia / agents to control anxiety.
- Drug (medication) knowledge and interactions.
- Prescription writing.
- Abuse of prescriptions by patients.
- Taking complete medical histories.
- The use of the New Jersey Prescription Monitoring Program (NJMPMP).

This course should satisfy the three hours required by the NJ Board of Dentistry.



Faculty:

DAVIS THOMAS, BDS, DDS, MSD, MscMed (Sleep Medicine), MSc

Clinical Associate Professor

Department of Diagnostic Sciences,

Division of Orofacial Pain

Wednesdays, September 10 & 24, 2025

12:30 to 2 p.m. each day / 3 credit hours

ON-LINE at Rutgers School of Dental Medicine

\$125 All Registrants / Code: 26D0804

Evidence-Based Dental Practice: A Primer for the Dental Professional

Dentistry is a rapidly evolving profession where new diagnostic and treatment modalities become available at an accelerating rate. You need to be able to access and assess information critical to making wise clinical decisions.

Evidence-based Dentistry: Why and How-to Guide

Examples of evaluating important ideas and technologies. Types of studies used to establish cause of disease and impact of new and existing treatments. By focusing on patient population, intervention under consideration, control and assessing outcome in clinical study results. Application of evidence to dentistry has grown beyond evaluation of preventive methods to applying evidence-based principles to difficult treatment planning decisions such as when and how to replace teeth. We will evaluate new technologies and advertising claims.

Evaluating Evidence Concerning the Link between Dental and Systemic Health

Patients frequently ask about links between their oral health and overall health. Is there a link between periodontal disease and cardiovascular conditions? Is diabetes affected by dental health? We will discuss the types of studies that can shed light on these important questions; and methods to evaluate the quality of evidence.

Evaluating Diagnostics Devices and Procedures

We will discuss metrics of diagnostic performance and types of clinical studies that can compare various diagnostic modalities. Examples of using these metrics to select tests and devices will be drawn from caries, periodontal disease, cancer and the world of medicine.

Faculty:

Department of Diagnostic Sciences

KENNETH MARKOWITZ, DDS, MSD, Associate Professor
Departments of Oral Biology and Restorative Dentistry

MAXINE STRICKLAND, DMD, MPH, Associate Professor
Department of Diagnostic Sciences

Both Drs. Markowitz and Strickland have attended American Dental Association courses in evidence-based dentistry

Wednesday, September 10, 2025

9 a.m. to 1 p.m. / 4 credit hours

IN-PERSON at Rutgers School of Dental Medicine

\$145 Dentists • \$95 Auxiliaries/Residents

Code: 26D0301

Pharmacology and Internal Medicine for Dentists (Inclusive of 1 hour of Opioids) (SBRC)

The course will focus on the fundamentals of pharmacology and internal medicine as related to the practice of dentistry.

Training includes the appropriate use of:

- Analgesics.
- Antibiotics.
- Local anesthesia / agents to control anxiety.
- Drug (medication) knowledge and interactions.
- Prescription writing.
- Abuse of prescriptions by patients.
- Taking complete medical histories.
- The use of the New Jersey Prescription Monitoring Program (NJMPMP).

*This course should satisfy the three hours required
by the NJ Board of Dentistry.*



Faculty:

**DAVIS THOMAS, BDS, DDS, MSD,
MscMed (Sleep Medicine), MSc**

Clinical Associate Professor
Department of Diagnostic Sciences,
Division of Orofacial Pain

Wednesdays, September 17, 2025

9 a.m. to 1 p.m. / 4 credit hours

IN-PERSON at Rutgers School of Dental Medicine

\$165 All Registrants / Code: 26D0801

Opiate Prescribing and Alternatives in Pain Management

This course should help the participants adapt an evidence-based approach to patient management rather than use a one-size-fits-all strategy.

- Understand the importance of pain management in dental practice.
- Recognize that we have a choice of drugs that we can use.

Topics to be covered:

- Pain and dentistry: Why, where, and how.
- What drugs do we have available?
- Opiates – What is good about them.
When do we need these drugs?
- Opiates – What is bad about them.
- Legal/administrative issues with opiate prescribing in New Jersey.

Faculty:

KENNETH MARKOWITZ, DDS, BS

Associate Professor

Department of Oral Biology

Thursday, September 18, 2025

1 to 2 p.m. / 1 credit hour

ONLINE through Rutgers School of Dental Medicine

\$59 All Registrants / Code: 26D0302-C18

Next Scheduled Dates:

Saturday, October 4, 2025

11 a.m. to 12 p.m. / 1 credit hour

ONLINE through Rutgers School of Dental Medicine

\$59 All Registrants / Code: 26D0302-D04

Monday, October 20, 2025

7:30 to 8:30 p.m. / 1 credit hour

ONLINE through Rutgers School of Dental Medicine

\$59 All Registrants / Code: 26D0302-D20

Oral Medicine Nuts and Bolts

A Systematic Approach to Evaluation of Benign and Malignant Oral Soft Tissue Lesions

Oral Health Management of Patients with Oral Cancer

Presented by: MAHNAZ FATAHZADEH, DMD, BSC

In addition to examining the dental and periodontal structures, the oral health practitioner is required to be familiar with the plethora of oral lesions which can present in the oral cavity. This interactive, case-based presentation will provide practical guidelines for accurate initial assessment of lesions most commonly seen in the dental office and provide the oral health care provider with a level of comfort when he/she must make clinical decisions regarding management.

- What are the variations of normal in the oral cavity?
- Which lesions may be diagnosed clinically and how?
- How long should one “watch” a lesion?
- Which lesions should be assessed immediately/referred?
- Indications for biopsy and different types of biopsy techniques.
- How to treat commonly occurring conditions such as traumatic ulcers, canker sores, fever blisters, pyogenic granulomas, ANUG, thrush, angular cheilitis, hairy tongue, symptomatic geographic tongue.
- Follow-up regimen and documentation process.

Prevention and early detection of oral cancer is a professional responsibility. More than 50,000 cases of oral cancer are diagnosed each year in the United States and about 10,000 Americans die from this disease annually. Treatment of advanced carcinoma is associated with significant morbidity and despite recent advances, the survival rate from advanced carcinoma remains satisfactory primarily due to late-stage diagnosis. Early detection dramatically improves prognosis and survivorship. Through illustrated case presentations, this program reviews:

- Epidemiology, risk factors and presentation of oral cavity and oropharyngeal cancer.
- Clinical spectrum and management of oral cavity pre-cancer.
- Role of adjunct techniques in early detection of premalignant lesions in oral cavity.
 - Classification, epidemiology, transmission, and natural history of HPV infection.
 - Pathogenesis of HPV-induced oral warts & oropharyngeal malignancies.
- Therapeutic complications of advanced oral malignancy and their management.
- How would current or previous therapy for oral cancer impact dental care?
 - Prevention of oropharyngeal cancers through HPV vaccination.
- Role of dental professionals in the prevention of oropharyngeal cancer.

Wednesday, September 24, 2025

9 a.m. to 4 p.m. / 6 credit hours

IN-PERSON at Rutgers School of Dental Medicine

\$185 Dentists • \$145 Auxiliaries/Residents

Code: 26D0802

Strategies for Comprehensive, Complication-Free Implant-Based Restorative

In the ever-evolving landscape of implant dentistry, practitioners are met with a burgeoning array of opportunities to cater to a diverse and expanding patient demographic. Gone are the days when the traditional extract, implant, and restoration protocols sufficed. Today, the demands of patients extend far beyond the conventional, necessitating a nuanced approach to planning and coordination for optimal restorative outcomes.

In this lecture, we delve into the pivotal role of meticulous planning and seamless coordination in achieving superior results, spanning from straightforward implant cases to intricate rehabilitations.

Course Objectives:

- Explore the diverse treatment options offered to patients pursuing implant treatment, encompassing traditional approach as the basic guideline.
- Gain proficiency in the fundamental principles crucial for effectively treating a spectrum of implant cases, ranging from straightforward to intricate.
- Develop proficiency in treatment planning across the spectrum of implant cases, from straightforward to complex, ensuring comprehensive patient care.
- Master the strategic sequencing of treatment plans to achieve simplicity and predictability in outcomes, optimizing patient satisfaction and clinical success.

Faculty:

HODA YOUSEF, DMD

Associate Professor

Department of Restorative Dentistry

Friday, October 3, 2025

10 a.m. to 5 p.m. / 6 credit hours

IN-PERSON at the Rutgers School of Dental Medicine

\$145 Auxiliaries/Residents

Code: 26D0101

Medical Update: Review of the MD in DMD

The contemporary dentist is presented with medically challenged patients who function independently in society due to recent advances in medical management. Many patients with chronic conditions are managed on an outpatient basis with expected extended lifespans. As a result, the dentist will encounter patients with complex medical conditions that require a thorough understanding of disease processes and implications of dental therapeutic interventions including pharmacological modification.

This course will present an update and review of the more commonly seen medical conditions for dental practitioners. It will present useful and practical management guides for treatment of medically compromised patients, including a review of commonly prescribed medications and their implications to dental treatment.

Objectives:

- Review common medical conditions and current therapeutic interventions.
- Relate medical conditions to their impact on delivery of dental services.
- Discuss patient evaluation in ascertaining relative risks in performing dental procedures.
- Establish guidelines and limitations in the delivery of dental services based upon medical conditions.

Faculty:

Department of Oral & Maxillofacial Surgery

VINCENT B. ZICCARDI, DDS, MD, FACS – Course Director

Professor and Chair

PAMELA ALBERTO, DMD, Associate Professor

HANI BRAIDY, DMD, Associate Professor

BARRY ZWEIG, DDS, Professor

RABIE SHANTI, DMD, MD, Associate Professor

VICTOR PETRIELLA, DMD, Assistant Professor

SALVATORE NAPOLI, DDS, MD, Associate Professor

Wednesday, October 8, 2025

10 a.m. to 5 p.m. / 6 credit hours

IN-PERSON at Rutgers School of Dental Medicine

\$185 Dentists • \$145 Auxiliaries/Residents

Code: 26D0902

Two-Implant Mandibular Overdenture: Restoring Quality of Life, as Well as Teeth – HANDS-ON WORKSHOP –

Approximately 10% of Americans over the age of 18 are completely edentulous. A conventional maxillary denture suits the needs of most patients. However, mandibular dentures have problems with retention, stability, function and esthetics. This creates a less than ideal quality of life for these patients. A two-implant supported overdenture overcomes many of these problems and can be relatively cost effective, especially if their existing denture can be retrofitted at chairside obviating the expensive laboratory costs. The morning lecture is followed by an afternoon hands-on laboratory session consisting of restorations in mannequins.

Topics to be covered:

- Diagnosis and treatment planning.
- Implant placement.
- Impression techniques.
- Restorative options (bar, ball attachments, locators & magnets).
- Retrofitting an existing denture.
- Overdenture economics.
- Complications.

Objectives:

- Improve quality of life of your patients.
- Increase your patient pool.
- Offer additional service in your practice.

Faculty:

BARRY ZWEIG, DDS

Professor, Department of Oral & Maxillofacial Surgery;
Professor, Department of Periodontics;
and Director of the Dental Implant Center

HEBA ELKASSABY, BDS

Assistant Professor, Department of Restorative Dentistry

Limited Enrollment

Friday, October 17, 2025

9 a.m. to 4 p.m. / 6 participation credit hours
IN-PERSON at Rutgers School of Dental Medicine
\$395 Dentists / Code: 26D0102

**The Rutgers School of Dental Medicine gratefully
acknowledges support for this activity from:
Nobel Biocare**

THE INTERNET COURSE: Orofacial Pain from a Medical Perspective

Learn the latest in orofacial pain diagnosis and management from the comfort of your home or office. This innovative, online course is a formal educational experience. Emphasis will be on the diagnosis and management of patients with neuropathic, neurovascular (headache) and musculoskeletal disorders.

See our website for complete information including a syllabus – cde.sdm.rutgers.edu

Begins October 20, 2025 and ends by May 15, 2026

\$2,595 (US) Dentists – Register by September 7, 2025

\$2,695 (US) Dentists – Register after September 7, 2025

96 credit hours upon completion of post-test / Code: 26D0830

SUBSTANCE USE DISORDERS TRAINING (DEA MATE & SBRC)

This course is designed to meet the new DEA MATE initial or renewal registration requirements.

This hybrid course with on-site (6.5 hours) and self-paced (1.5 hours reading assignment) is structured to satisfy the new DEA requirement for any practitioner with a DEA license or new applicants for the same. The objective for this new DEA requirement, as per the DEA website, is to “promote understanding of SUDs as well as their identification, treatment and management.” This goes into effect as of June 27, 2023.

Topics to be covered include, but not limited to:

- Neuroanatomy and neurophysiology of pain, substance abuse and addiction: pain pathways, pain mechanisms; neurons; receptors; types of pain.
- Substance abuse and addiction: terminology, definitions; drugs of abuse and addiction; identifying the risk factors; and who is prone?
- Epidemiology of SUD and addiction: Global, US, state, and local; age, gender, race, geographic predilection, and others.
- Evaluating analgesic studies and the Opioid Analgesic Reduction Study (OARS study).
- Principles of sound pain management: safe pharmacological management of dental pain; acute and chronic pain.
- Neurophysiology and pharmacology of substance abuse and addiction: neurotransmitters; reward pathways; brain centers of substance use and addiction.
- Pharmacologic management of substance use disorder: medications and regimens commonly used for SUD: opioids, alcohol, tobacco, others. Reversal agents.
- Referral: who, when, to whom? Follow up and what to avoid in a de-addicted person.

READING ASSIGNMENT:

Literature review (self-study.) Upon registration, a pdf of 8 to 10 articles will be emailed for home study/reading.

This portion is worth 1.5 credit hours.

At the completion of the course, you will be able to:

- Understand the basics of pain physiology, mechanisms, and principles of sound pain management.
- Learn to identify patients with the potential for substance use disorders and prevention of SUD.
- Learn safe pharmacological management of dental pain.
- Understand the basics of pharmacology of the treatment of SUDs.
- Know the fundamentals of reversal agents, de-addiction, and rehabilitation.
- Learn how and when to refer these patients and to whom.

Faculty:

CECILE FELDMAN, DMD, MBA

Professor and Dean
Rutgers School of Dental Medicine

JANINE FREDERICKS-YOUNGER, DMD, BA

Assistant Professor
Department of Restorative Dentistry

DAVIS THOMAS, BDS, DDS, MScMed (Sleep Med.), MSc

Clinical Associate Professor
Department of Diagnostic Sciences

Wednesday, October 22, 2025

9:00 a.m. to 4:30 p.m. / 6.5 credit hours

Reading Assignments / 1.5 credit hours

IN-PERSON at the Rutgers School of Dental Medicine

\$225 All Registrants / Code: 26D0803

Local Anesthetic and Pain Control: Recertification for Dental Hygienist

This is a 4-hour course available ONLINE through Rutgers School of Dental Medicine

The course was developed by the Department of Oral and Maxillo-facial Surgery at Rutgers School of Dental Medicine to meet all the requirements as set forth by the New Jersey State Board of Dentistry.

We will provide four hours of didactic lecture material necessary for recertification of a licensed Dental Hygienist in local anesthesia. The lectures will cover pharmacology of local anesthetics and reversal agents, along with a review of maxillary and mandibular injection techniques. Lectures will also be presented on management of medical emergencies encountered during the administration of a local anesthetic along with emergency cart preparation.

Topics to be covered:

- Emergency Equipment and Preparation – The Emergency Cart.
- Pharmacology of Local Anesthesia.
- Techniques of Maxillary Anesthesia.

Faculty:

PAMELA ALBERTO, DMD, BS

Course Director

Clinical Associate Professor

Tuesday, November 4, 2025

Additional Dates: November 5, 11, & 12

9 to 10 a.m. each day / 4 credit hours

ON-LINE through Rutgers School of Dental Medicine

\$145 Dentists / Code: 26D0903

Patient Monitoring for Nitrous Oxide Analgesia Delivery (DH & RDA) – and – Recertification for Dental Hygienists & Registered Dental Assistants

This course meets the requirements set forth by the NJ Dental Board to provide three hours of didactic training necessary for recertification of a licensed dental hygienist or registered dental assistant practicing under direct supervision of a licensed dentist to monitor a patient whom the supervising dentist has administered nitrous oxide/oxygen inhalational anesthesia. Particular emphasis will be given to recognition of complications and other untoward events so that participants are able to quickly terminate the nitrous oxide analgesia delivery along with other necessary appropriate steps including summoning the supervising dentist. This course will be in lecture format with group discussion.

Upon completion of this course, participants should be able to:

- Take a medical history and complete a review of systems based upon the patient interview.
- Recognize and assist in management of common medical emergencies in the dental office.
- Understand the pharmacology of nitrous oxide and its effects on organ systems.
- Understand techniques for nitrous oxide analgesia delivery including preoxygenation, titration, monitoring and termination of anesthesia delivery.
- Be aware of complications of nitrous oxide analgesia administration including their recognition and management.
- Review safety features of modern nitrous oxide analgesia armamentarium including scavenging and monitoring systems available today.

Faculty:

VINCENT B. ZICCARDI, DDS, MD, Course Director

Professor and Chair

Plus, Faculty from the Department of Oral & Maxillofacial Surgery

Wednesday, November 19, 2025

10 a.m. to 1 p.m. / 3 credit hours

ONLINE through Rutgers School of Dental Medicine

\$105 Dental Hygienists & Registered Dental Assistants

Code: 26D0904



RUTGERS HEALTH
School of Dental Medicine
Continuing Education

HOW TO REGISTER FOR CDE COURSES

On-line:
cde.sdm.rutgers.edu

By Phone:
973-972-6561
Monday to Friday
8:00 a.m. to 5:00 p.m.

By Mail:
Complete & mail form to:
Rutgers School of Dental Medicine
Continuing Dental Education
110 Bergen Street, B701
Newark, NJ 07103

FOLLOW US ON



16th Annual

Rutgers School of Dental Medicine and
The American Academy of Implant Dentistry



A Comprehensive Hands-on Training Program IN IMPLANT DENTISTRY

September 2025– June 2026

Ten Friday to Sunday Modules
8:00 a.m. to 5:00 p.m. each day
At the Rutgers School of Dental Medicine

Call the Office of Continuing Dental Education for tuition.

This program has been designed to impart the understanding of diagnostic and treatment modalities necessary to properly treat patients who are candidates for dental implant therapy. The 300-hour interdisciplinary approach utilizes case-based learning methodology including lectures, demonstrations, interactive seminars, hands-on sessions, patient treatment, and relevant reviews of literature emphasizing evidence-based clinical approaches.

For details: cde.sdm.rutgers.edu/maxicourse



RUTGERS HEALTH
School of Dental Medicine
Continuing Education

REGISTRATION FORM

PLEASE PRINT CLEARLY • PHOTOCOPIES ACCEPTED

Name _____ Degree _____

Address _____

City _____ State _____ Zip _____

Email _____ Primary Phone _____

Please register me for the following course(s):

CODE	COURSE TITLE	DATE	\$ TUITION

TOTAL TUITION \$ _____

PAYMENT INFORMATION: Pay by: ☐ MasterCard ☐ Visa ☐ Discover ☐ Check or Money Order payable to: "Rutgers-CDE"

Card # _____ CVC # _____ Expiration Date _____

Signature _____

16th Annual

September 2025 – June 2026

Rutgers School of Dental Medicine and The American Academy of Implant Dentistry



A Comprehensive Hands-On Training Program in Implant Dentistry

The MaxiCourse® Advantage

- 300+ hours of comprehensive lectures, live surgeries, demonstrations and hands-on sessions.
- Hands-on patient treatment under direct supervision. (*Bring your own patients.*)
- In-depth review of surgical and prosthetic protocols.
- Non-commercial course covering a wide spectrum of implant types and systems.
- *Course satisfies educational requirement for Associate Fellowship in AAID.*

Program Directors



GEORGE ATHANSIOS, DMD, FAGD, DABOI

Clinical Assistant Professor
Department of Periodontics
Private Practice in West Milford, NJ



SHANKAR IYER, DDS, MDS

Clinical Assistant Professor
Departments of Restorative Dentistry and Periodontics
Private Practice in Elizabeth, NJ

Program Information

- Dates:** Ten Friday to Sunday Modules
Beginning September 26, 2025 and
Ending May 31, 2026
- Time:** 8:00 a.m. to 5:00 p.m. each day
- Location:** Rutgers School of Dental Medicine in
Newark, NJ
- Tuition:** \$16,375 – Register by August 15, 2025
\$17,375 – Register after August 15, 2025
- Credits:** 300 participation credit hours

This program has been designed to impart the understanding of diagnostic and treatment modalities necessary to properly treat patients who are candidates for dental implant therapy. The 300-hour interdisciplinary approach utilizes case-based learning methodology including lectures, demonstrations, interactive seminars, hands-on sessions, patient treatment, and relevant reviews of literature emphasizing evidence-based clinical approaches.

For details:
cde.sdm.rutgers.edu/maxicourse/



Scanning QR code will
take you directly to the
cde.sdm.rutgers.edu
website.

**This will be the only Continuing Dental Education
Catalog for the FALL 2025 season.**
**To receive course alerts and reminders, sign-up for
email updates through our website at cde.sdm.rutgers.edu**



RUTGERS HEALTH

School of Dental Medicine

Continuing Education

110 Bergen Street, B701, Newark, NJ 07103

Non-Profit Org
U.S. Postage
PAID
New Brunswick
NJ 08901
Permit #157

Rutgers, The State University of New Jersey

Fall 2025 SPECIAL EVENTS Hands-On Courses

MARC GEISSBERGER, DDS, MA
Friday, October 24

BARRY ZWEIG, DDS
HEBA ELKASSABY, BDS
Friday, October 17

GERORGE TEWFIK, MD
RANIA AZIZ, MD
VINCENT ZICCARDI, DDS, MS, FACS
Wednesday, August 27

Visit our website @
cde.sdm.rutgers.edu
for additional
course and speaker information
plus online registration.

State Board Required Courses (SBRC) and DEA MATE Courses (DEA MATE)

Saturday, September 13, 2025 (SBRC)

Effective Medical Evaluation and Pharmacology Protocols for the Dental Patient

- James Rutkowski, DMD

Wednesday, September 17 (SBRC)

Pharmacology and Internal Medicine for Dentists (Inclusive of 1 hour of Opioids)

- Davis Thomas, BDS, DDS, MSD

Wednesday, September 24 (SBRC)

Survey of Current Updates in Dental Ethics and the Law

- Kevin Earle, MBA, MPH

Tuesday, September 30 (SBRC)

Dental Infection Control Essentials

- John Molinari, PhD

Friday, October 17 (SBRC)

2 Topics / 1 Day – High Stakes Dental Safety: Don't Panic, You've Got This
-and- Right Under (and Up) Our Noses... And Evolving Before Our Eyes,
Emerging & Re-emerging Diseases

- Nancy Dewhirst, RDH, BS

Wednesday, October 22 (DEA MATE & SBRC)

Substance Use Disorders Training

- Cecile Feldman, DMD, MBA
- Janine Fredericks-Younger, DMD, BA
- Davis Thomas, BDS, DDS, MSD